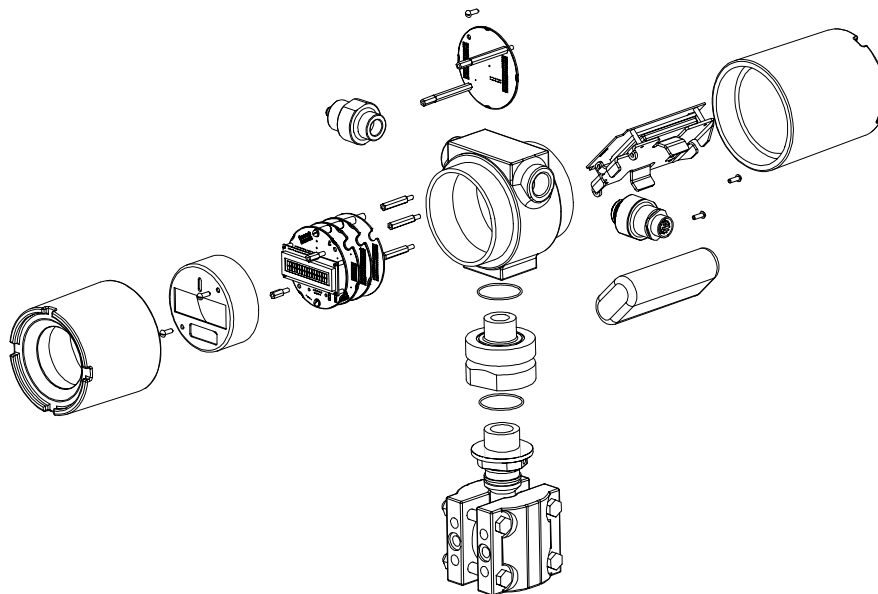
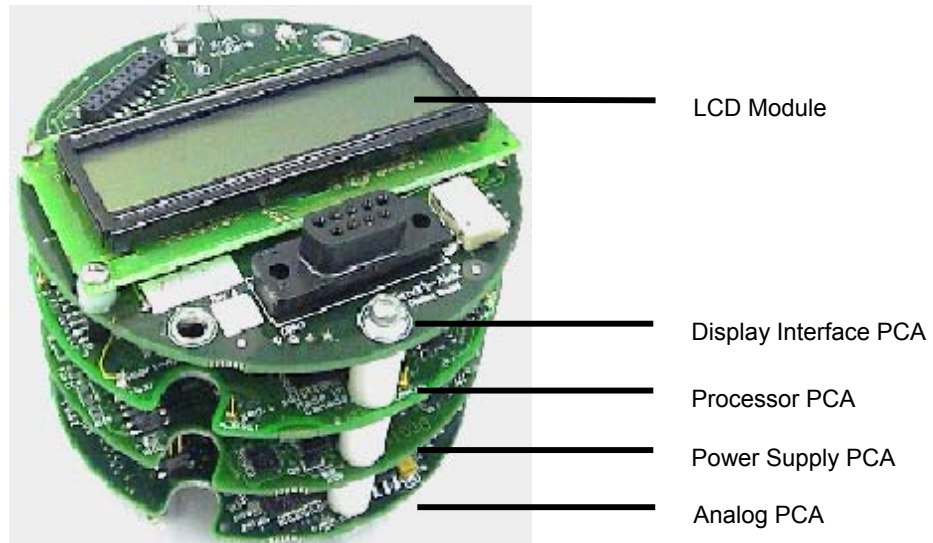


General Information on Smart-Alek V2 Board Installation



FIELD SERVICE REFERENCE DOCUMENT



General Information on Smart-Alek V2 Board Installation

CAUTION: Static Sensitive Device(s)



Contains components susceptible to damage from Electrostatic Discharge. Handle only at static-protected workstations using static preventive processes.

CAUTION: Place Smart-Alek into **Off-line mode** and **turn off power** prior to performing this procedure.

Display Board Removal



Remove 2 screws holding cover

General Information on Smart-Alek V2 Board Installation



Remove Cover (Shown with cover removed)

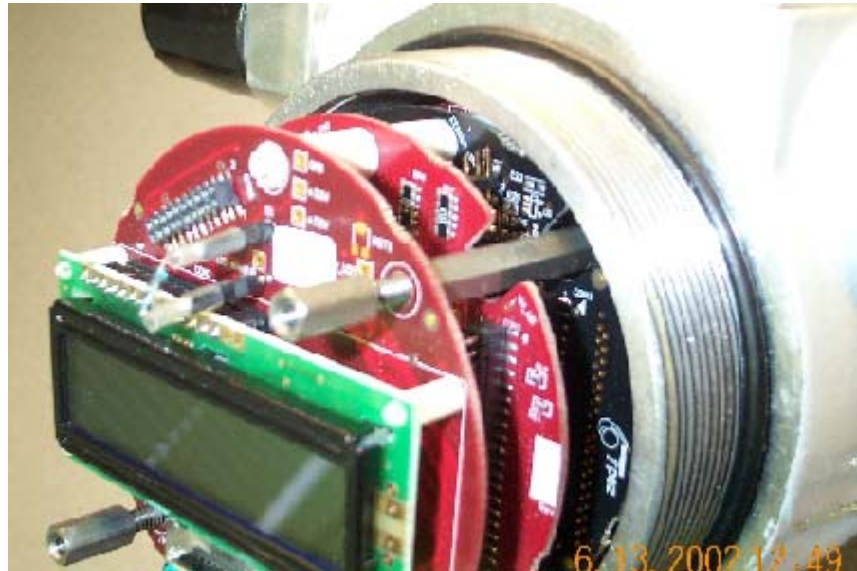


Remove 2 screws that hold board-stack down

FIELD SERVICE REFERENCE DOCUMENT



General Information on Smart-Alek V2 Board Installation



Remove 2 standoffs that hold Display Board



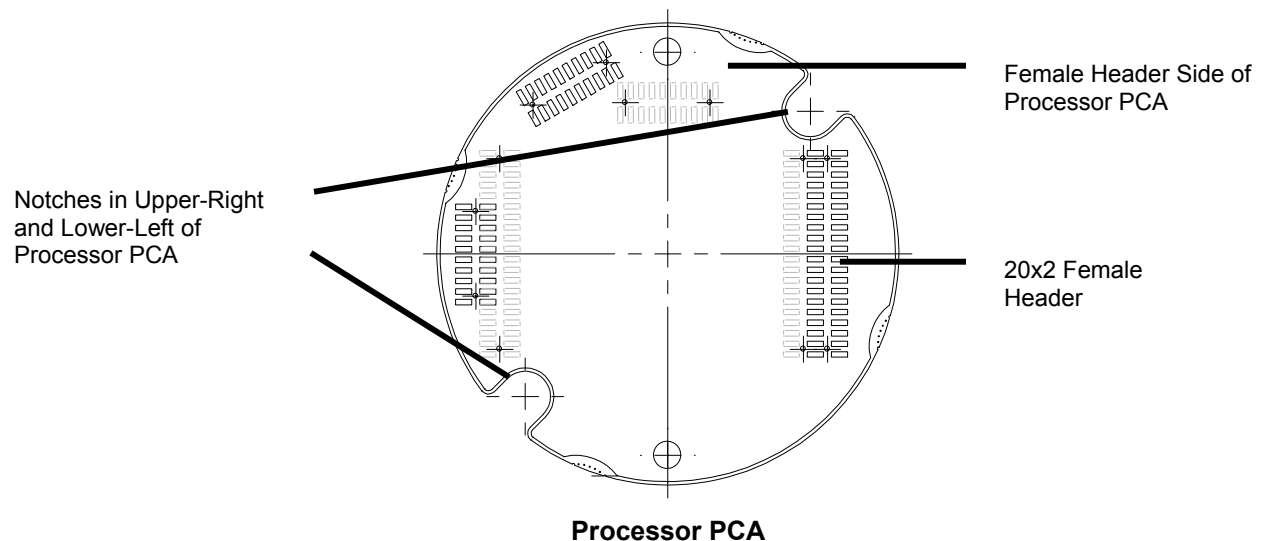
Remove Display Board (shown with board removed)

General Information on Smart-Alek V2 Board Installation

Installation

Note: Make sure the **Button Battery** is installed in the appropriate location on the **Display Interface PCA** when assembling the Display Interface PCA on top of the Processor PCA.

Make sure each board is aligned and oriented with the screw hole and spacer notches in the upper-right and lower-left corners of the PCAs. Refer to the following diagram.



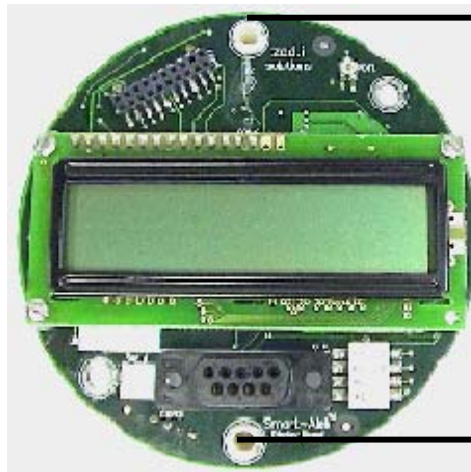
FIELD SERVICE REFERENCE DOCUMENT



General Information on Smart-Alek V2 Board Installation

1. Insert the two **#6-32 x 2 ½-inch machine screws** through the **nylon spacers** and **stack of PCAs** at the locations shown in the following diagram and thread the screws into the two **steel standoffs** attached to the bottom of the CCA stack.

#6-32 x 2 ½-inch
Machine Screw



Machine Screw
Installation Location

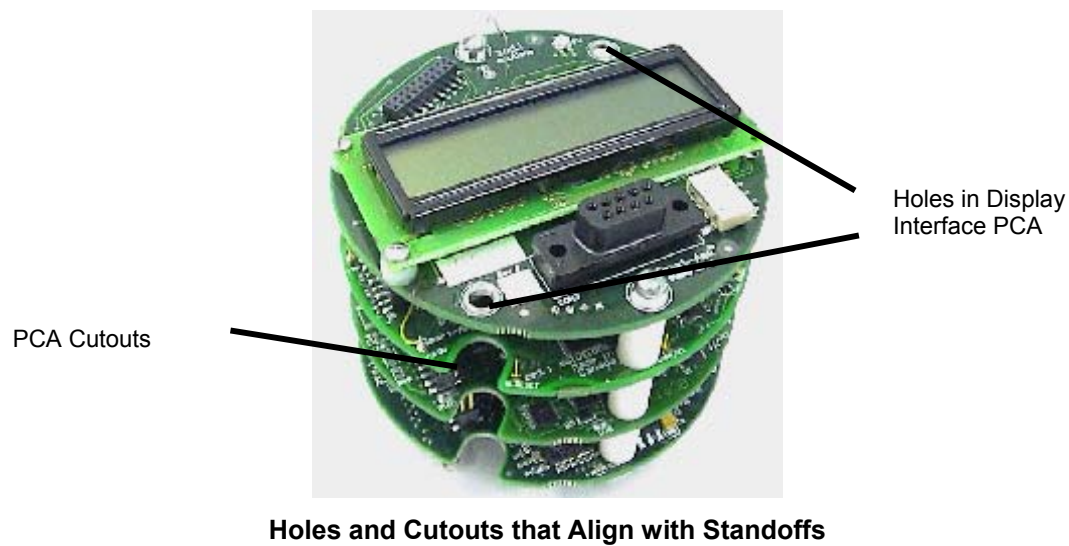
Machine Screw
Installation Location

#6-32 x 2 ½-inch Machine Screw Installation

Note: Torque the machine screws to **12 in. lbs.**

General Information on Smart-Alek V2 Board Installation**Installing the CCA****To install the Complete Circuit Assembly (CCA):**

1. Install the CCA onto the **Wiring PCA** by aligning the **standoffs** with the **cutouts** in the **bottom three PCAs** in the assembly and connecting the two **20x2 male headers** on the **bottom** of the **Analog PCA** (bottom PCA of the CCA) to the two corresponding **20x2 female headers** on the **top** of the **Wiring PCA**.



Note: Be sure the headers on the Wiring PCA connect to the headers on the CCA.

2. Insert the male end of each of the **two #8-32 x ½-inch M-F hex standoffs** through the holes in the **Display Interface PCA** and thread into the female end of the **2 11/16 -inch standoffs**. This holds the CCA in place by securing it to the standoffs.

Note: Torque the standoffs securing the CCA to 30 in-lbs.

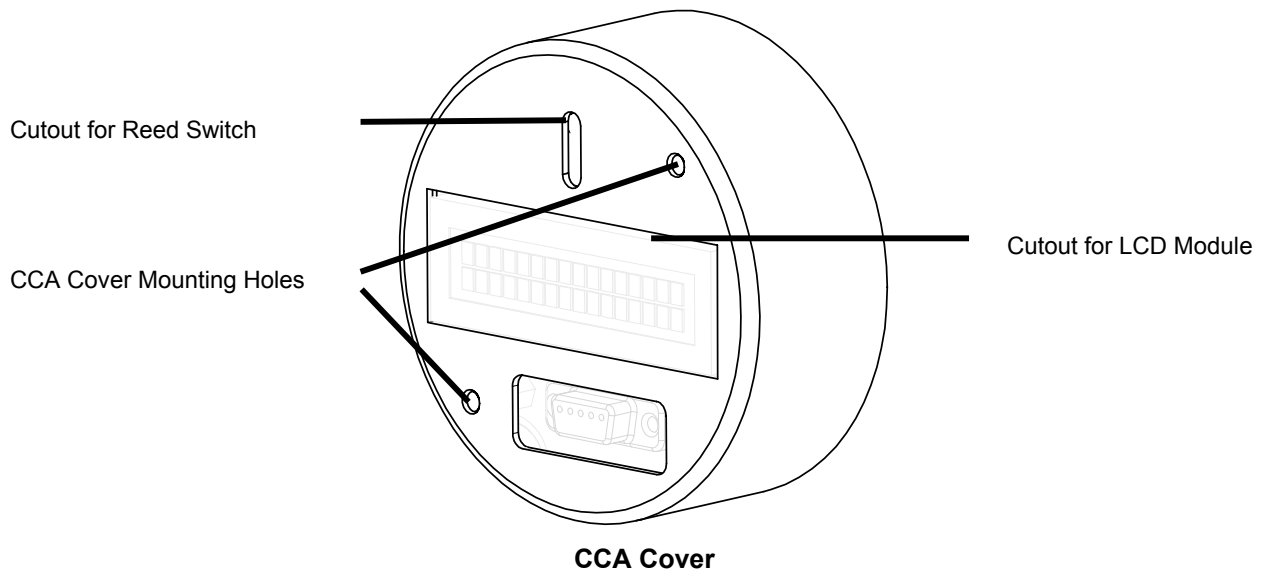
FIELD SERVICE REFERENCE DOCUMENT



General Information on Smart-Alek V2 Board Installation

3. Position the **CCA cover** over the installed CCA so that the CCA cover **mounting holes** align with the **standoffs** installed in the CCA and the **DB-9 connector** and the reed switch protrude through their appropriate **cutout** as shown below.

Note: The CCA Cover may not fit over the CCA if the Printed Circuit Board (PCB) breakaway tabs have not been completely removed.

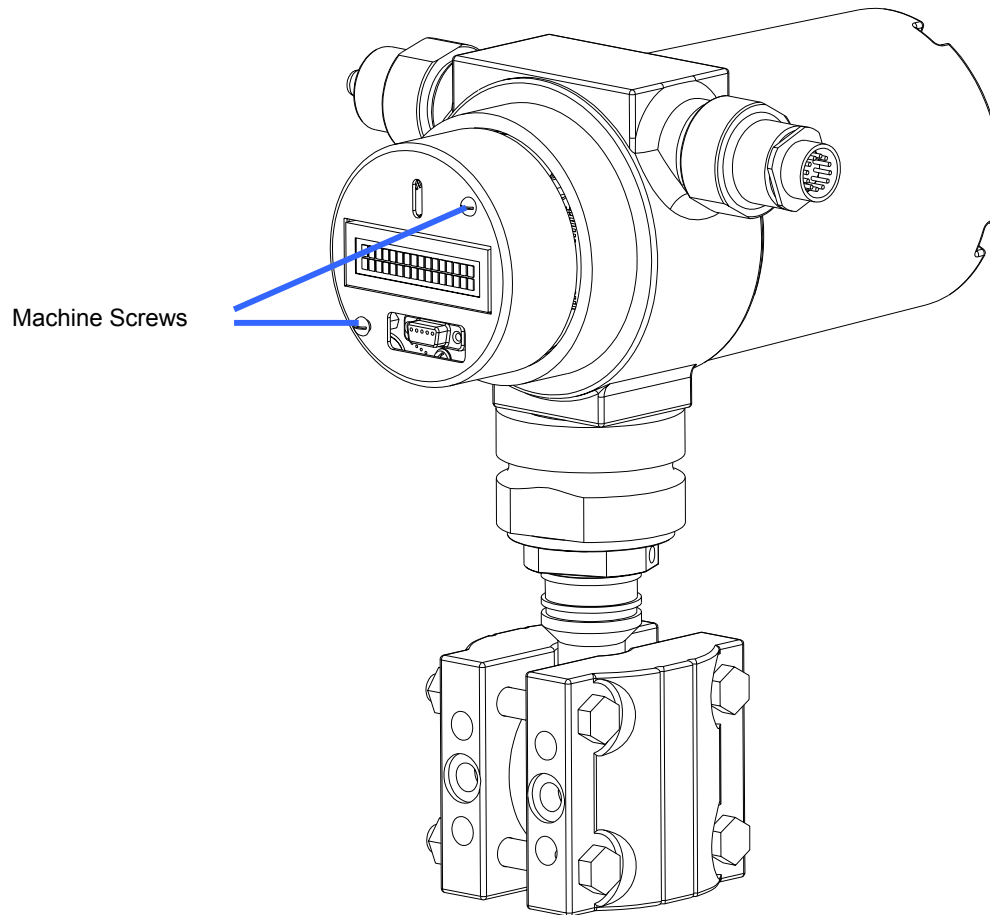


CAUTION: Take care not to damage the reed switch either when you position the CCA cover over it or if you have to manipulate the switch to make it protrude through its cutout.

General Information on Smart-Alek V2 Board Installation

4. Insert one #8-32 x $\frac{3}{8}$ -inch machine screw through each of the CCA cover mounting holes and thread the screws into the female end of the $\frac{1}{2}$ -inch steel hex standoffs.

Note: Torque the machine screws to 30 in. lbs. in the standoffs.



CCA Cover Installation